

Summary

On 31 December 2015:

- on a **seasonally adjusted**¹ basis, the total number of people registered as actively seeking work (ASW) was²:
 - 70 lower than the previous month
 - 130 lower than the average for the preceding three months
 - 40 lower than a year earlier
- the **non-seasonally adjusted** ASW total was 1,390; this total is 100 lower than in the previous month and 50 lower than a year earlier
- the decrease in both the seasonally adjusted and non-seasonally adjusted totals was driven by a reduction in the number of new individuals being registered as ASW this month; the total number of new registrations was the lowest recorded in almost 5 years
- the total number of **long-term ASW** (registered for more than twelve months) was 200; this total is essentially unchanged when compared with the previous month and 10 lower than a year earlier
- there were 350 individuals registered as ASW but engaged in some form of paid employment and classified as **underemployed**; this includes 100 individuals also classified as long-term ASW

Introduction

The Social Security Department compiles data on people registered as actively seeking work (ASW) in Jersey. The Statistics Unit independently analyses this anonymised data and publishes a monthly report.

It is important to note that unemployed Jersey residents are not required to register as ASW. There are however certain requirements for those in receipt of an income support claim. Changes to the income support criteria, as well as administrative decisions within Social Security, can have an impact on the total numbers registered as ASW (see [Appendix A](#) for more details). On a more historical basis, the introduction of Income Support in 2008 led to the inclusion of a greater number of individuals in the registered figures.

The numbers shown therefore constitute an informative set of indicators demonstrating the level of individuals registered as actively seeking work in the Island at a given point in time.

The internationally comparable unemployment rate is defined by the International Labour Organisation (ILO). This includes both the registered unemployed and those not registered but still seeking work.

The ILO unemployment rate for Jersey is measured by the Annual Social Survey, the Household Spending and Income Survey and the Census. In recent years, the ILO unemployment rate for Jersey has been:

- 4.7% in March 2011, measured by the 2011 Jersey Census, corresponding to 2,570 people being unemployed and looking for work in March 2011
- 5.7% in June 2013, measured by the 2013 Jersey Annual Social Survey, corresponding to 3,200 people being unemployed and looking for work in June 2013
- 4% in the period of April 2014 to May 2015, measured by the 2014/2015 Household Spending and Income Survey, corresponding to 2,500 people being unemployed and looking for work

¹ Seasonal adjustment is a statistical technique, which enables examination of the underlying behaviour in a series of data by removing variations associated with the time of year, e.g. Christmas, Easter, academic year.

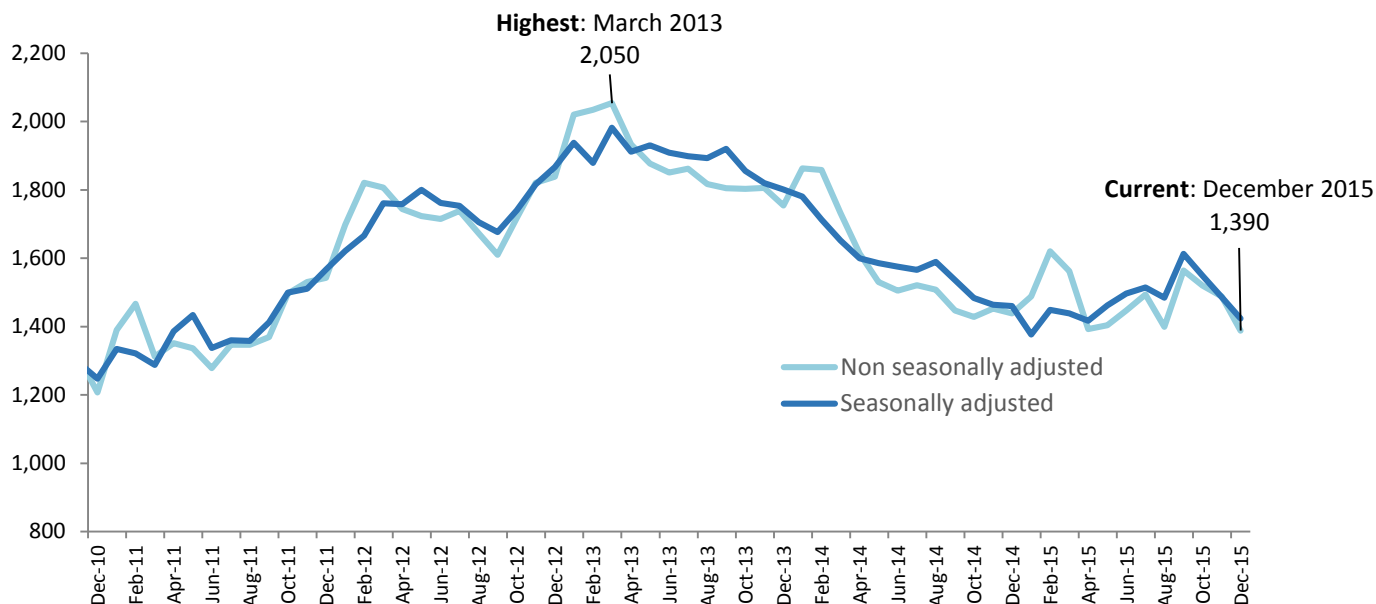
² ASW numbers presented in this report are rounded independently to the nearest 10.

Registered Actively Seeking Work

On 31 December 2015, 1,390 people were registered with the Social Security Department as actively seeking work (ASW). Over four-fifths (82%) of individuals registered as ASW on this date (corresponding to 1,140 people) were receiving Income Support³.

Figure 1 shows the total number of people registered as ASW at the end of each month since December 2010 (a table of the monthly data is shown in [Appendix B](#)). The total number registered in December 2015 was 100 lower than in the previous month and 50 lower than twelve months earlier (December 2014).

Figure 1 – Total number of individuals registered as ASW, December 2010 – December 2015



The seasonally adjusted series of the total registered as ASW, in which seasonal and calendar effects are removed, is also shown on Figure 1. From this perspective, the total number of people registered as ASW in December 2015 was:

- 70 lower than the previous month, November 2015
- 130 lower than the mean for the preceding three-month period, September 2015 to November 2015
- 40 lower than a year earlier, December 2014

The decrease in both the seasonally adjusted and non-seasonally adjusted totals was driven by a reduction in the number of new individuals being registered as ASW this month⁴.

In respect of both the seasonally adjusted and non-seasonally adjusted ASW totals, it should be noted, when making comparisons over time, that changes to the income support criteria, as well as certain administrative changes within Social Security, can result in changes in the total number of people being considered as ASW in a particular month (see [Appendix A](#) for more details).

³ The total number of adults receiving Income Support and not working will be greater than this figure, which represents the number of people receiving Income Support who were registered as ASW on 31 December 2015.

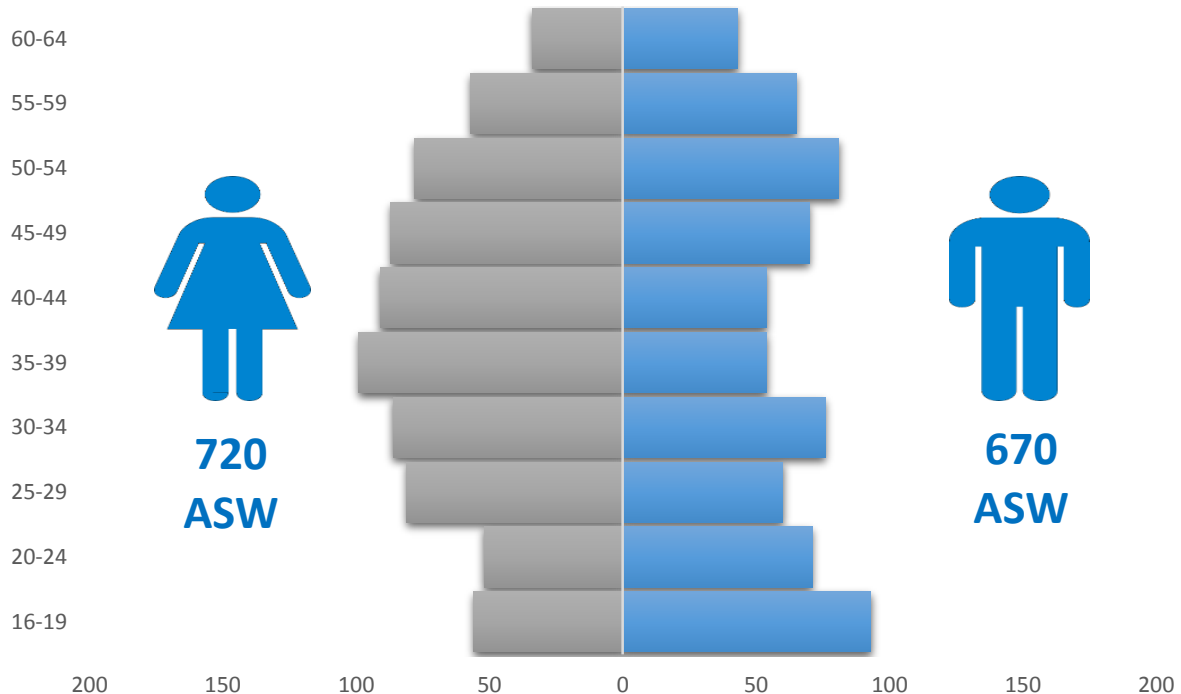
⁴ See [Registered ASW duration](#) – page 5 of this report

Registered ASW by age and gender

On 31 December 2015, 52% of people registered as ASW were female (720 individuals), and 48% were male (670 individuals).

Figure 2 shows the numbers registered as ASW both by age group and gender for this most recent month.

Figure 2 – Individuals registered as ASW by age and gender, December 2015

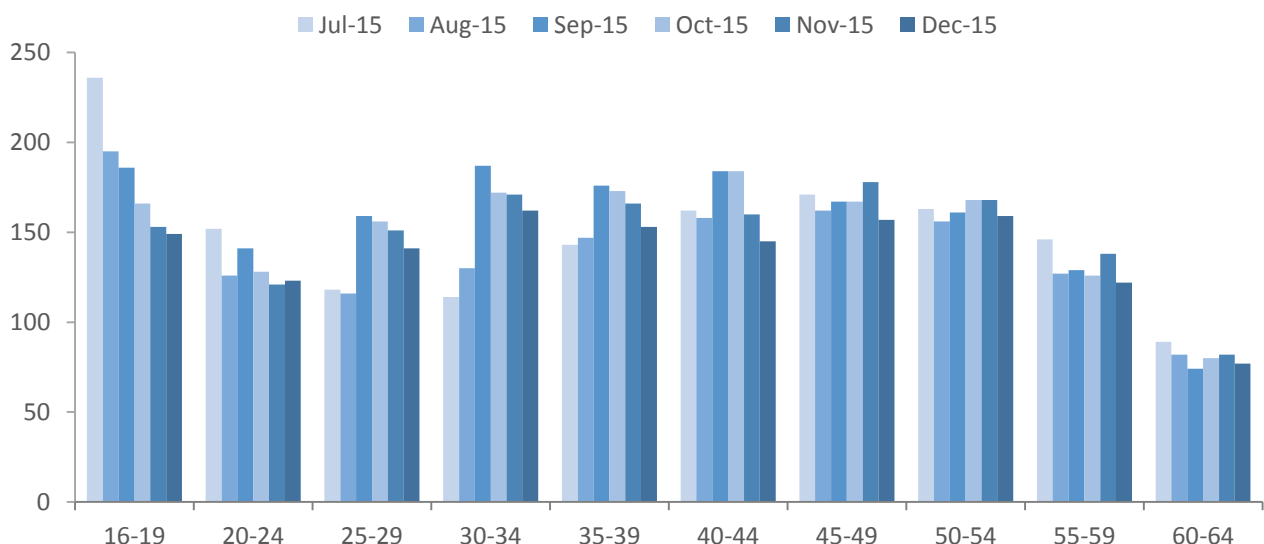


In respect of the breakdown of gender by age group:

- there were more males registered as ASW than females in both the youngest (16-24) and the oldest (50-64) age groups
- there were more females than males registered in all age groups ranging from ages 25 to 49
- the age group with the largest proportional gender difference was the 35-39 age group, where the number of females registered as ASW (100 individuals) was double the number of males (50 individuals)

Figure 3 shows the numbers registered as ASW by age of individuals in each of the last six months, from July 2015 to December 2015.

Figure 3 – Individuals registered as ASW by age, July 2015 – December 2015



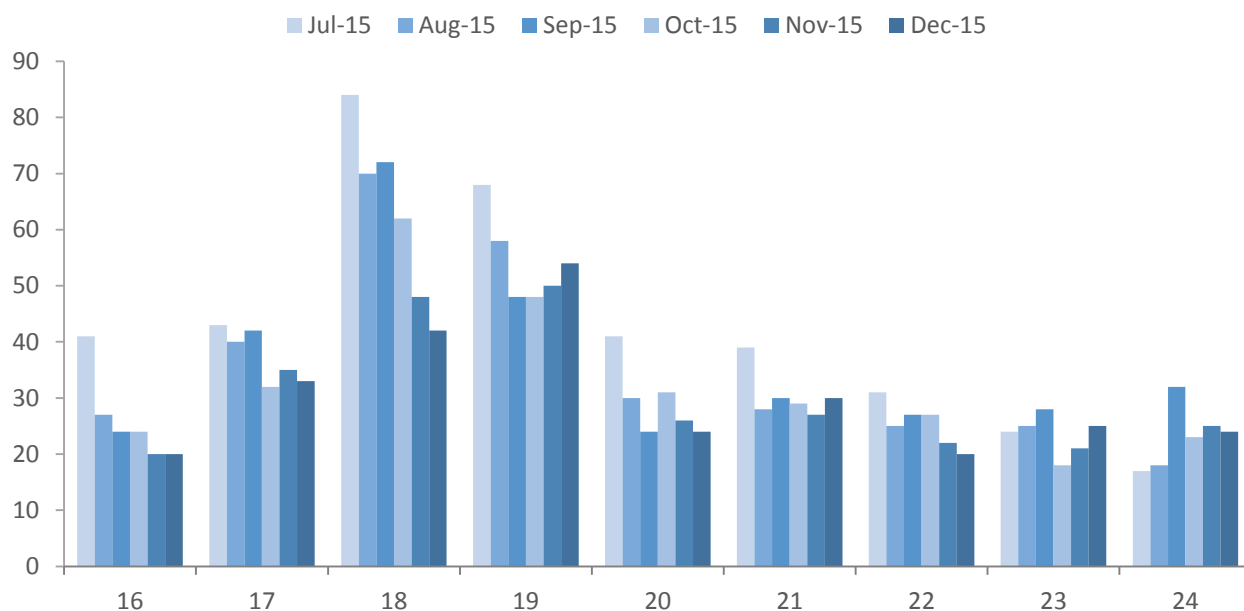
On 31 December 2015, almost a fifth (19%) of people registered as ASW were under 25 years of age (270 individuals); around one in nine (11%) of the total were teenagers, aged 16-19 years (150 individuals).

In the latest month:

- all age groups ranging from ages 25 to 54 years recorded decreases of between 10 and 20 individuals
- the youngest (16-24) and oldest (60-64) age groups were essentially unchanged

Figure 4 shows the age distribution for people below 25 years of age who were registered as ASW in the latest six months, from July 2015 to December 2015. Of those people registered as ASW at the end of December 2015, 90 were on the Advance to Work scheme.

Figure 4 – Individuals under the age of 25 registered as ASW, July 2015 - December 2015

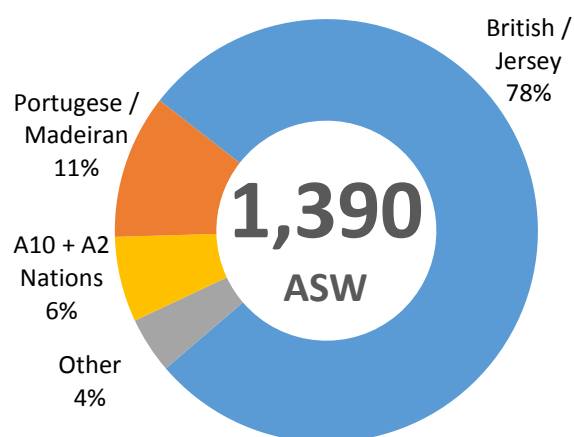


Registered ASW by nationality

On 31 December 2015:

- almost four-fifths (78%) of people registered as ASW were of British / Jersey nationality⁵; there was a decrease of 80 such individuals compared with the previous month
- there were 150 individuals of Portuguese/Madeiran nationality registered as ASW (11% of total), a decrease of 10 compared with the previous month
- there were 90 individuals from the EU Accession (A10+A2)⁶ nations registered as ASW; essentially unchanged from the previous month

Figure 5 – Individuals registered as ASW by nationality, December 2015



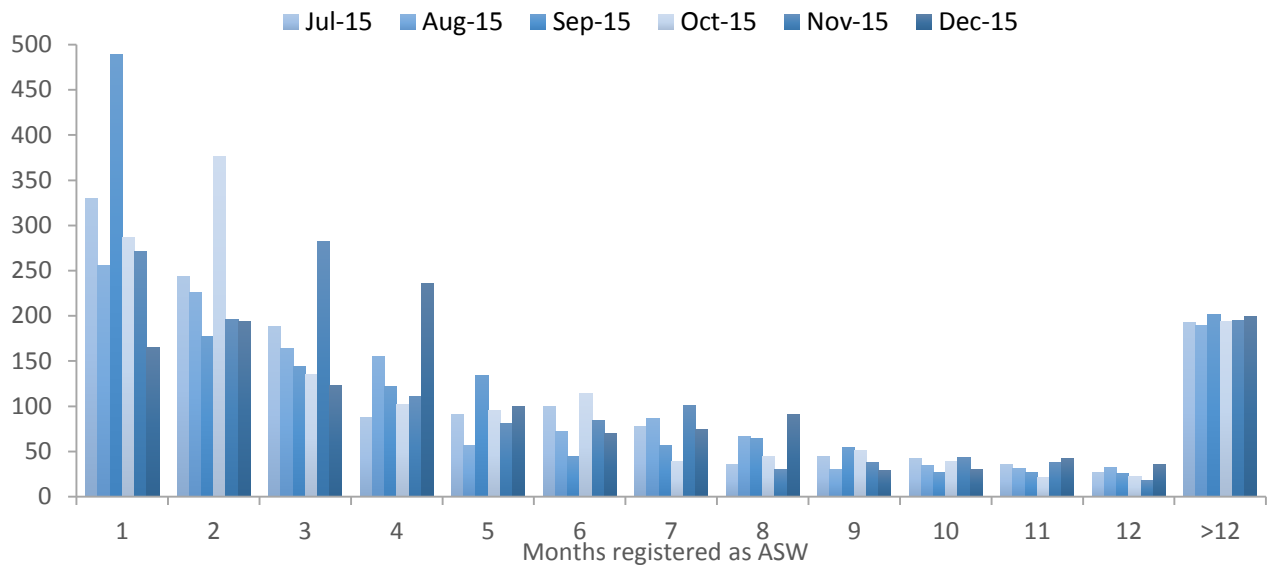
⁵ Nationality recorded by the Social Security Department, for the purpose of registering as ASW, is self-reported.

⁶ The twelve countries which joined (“gained accession to”) the European Union in May 2004 (Cyprus, the Czech Republic, Estonia, Hungary, Latvia, Lithuania, Malta, Poland, Slovakia and Slovenia) and January 2007 (Bulgaria and Romania).

Registered ASW duration

Around a third (35%) of all people registered as ASW on 31 December 2015 had been registered for three months or less - see Figure 6.

Figure 6 – Registered ASW by length of period registered (months), July 2015 - December 2015

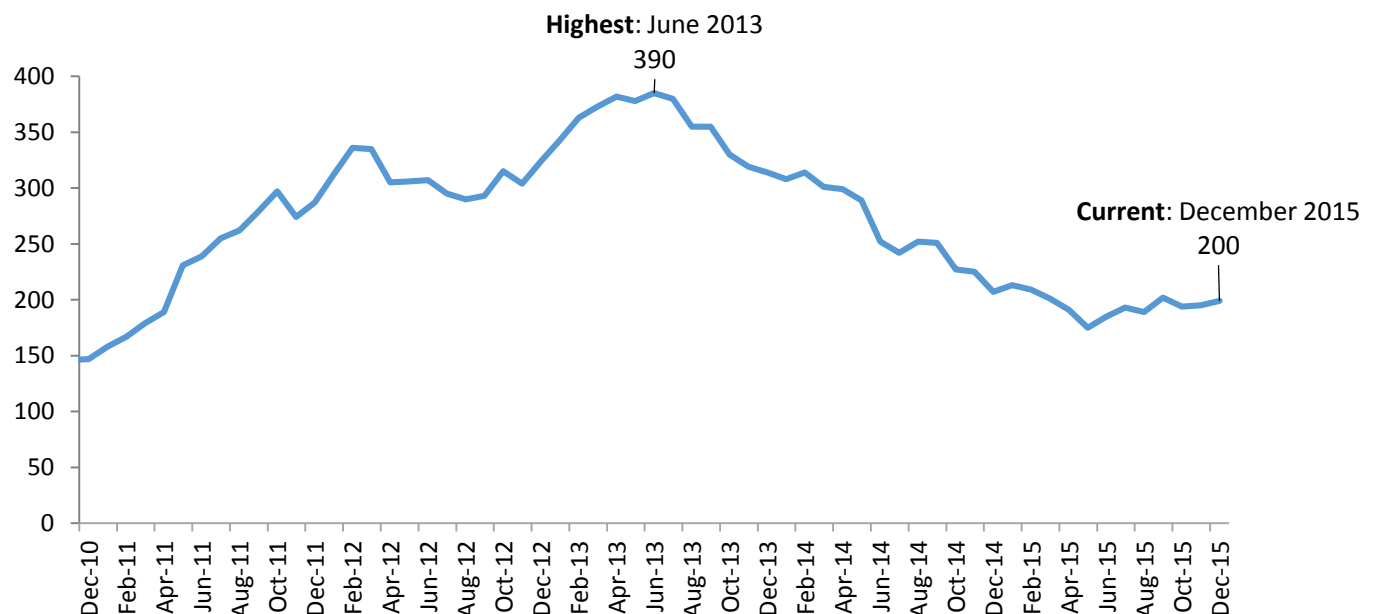


The number of new registrations in December 2015 (170 people) was 100 less than that recorded in the previous month (November 2015) and 50 less than a year earlier (December 2014). The total number of new registrations was the lowest recorded since April 2011.

Long-term Registered ASW

On 31 December 2015, there were 200 people who had been registered as ASW for more than twelve months, accounting for around one in seven (14%) of the total ASW. The latest number of long-term ASW was essentially unchanged compared with the previous month (November 2015) and 10 lower than twelve months earlier (December 2014).

Figure 7 – Long-term ASW, December 2010 – December 2015

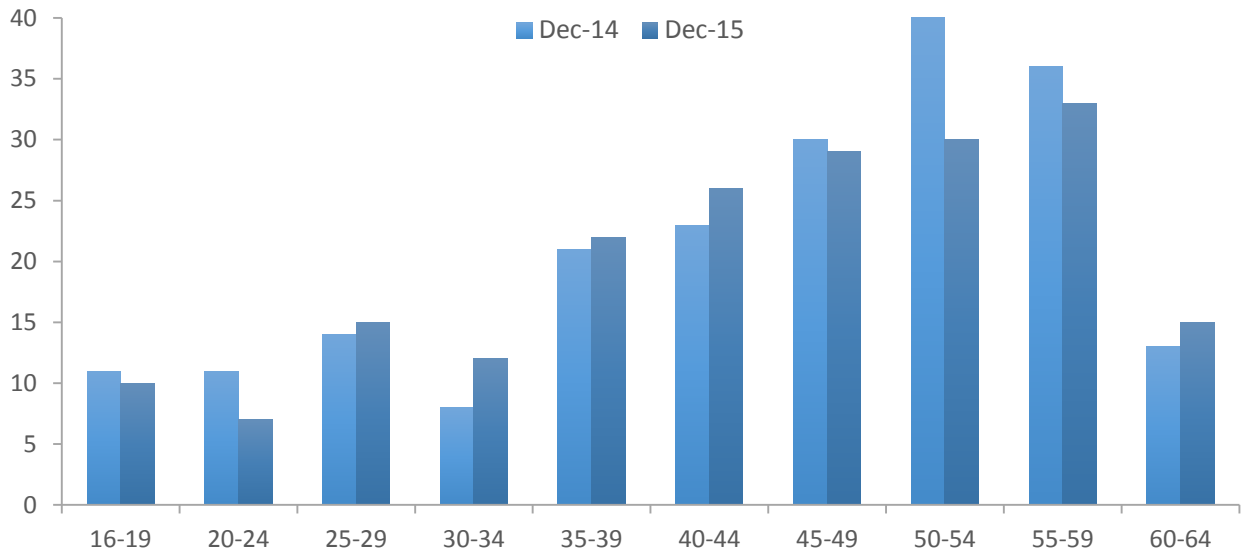


Of the 200 individuals that were registered as ASW for more than twelve months, 100 were engaged in some form of paid employment but were classified as underemployed⁷.

⁷ See [ASW registered underemployment](#) – page 7 of this report

Figure 8 shows the age distribution of the long-term ASW in December 2014 and December 2015.

Figure 8 – Long-term ASW by age, December 2014 and December 2015



The 50-54 age group recorded around 10 fewer individuals than twelve months earlier. All other age groups were essentially unchanged (changes of less than 10 individuals compared with twelve months earlier).

Industry

Individuals working in some industries of the economy, notably in the Finance sector, often seek employment through private agencies and do not register with the Social Security Department. Such industries will therefore tend to be under-represented in the ASW numbers.

The last industry of employment was recorded for around nine out of ten people registered as ASW. On 31 December 2015:

- over a fifth (21%) were previously employed in 'Retail and Wholesale, Motor repairs and sales'
- a sixth (16%) were previously employed in 'Miscellaneous professional & domestic services'
- a sixth (16%) were previously employed in 'Hotels, restaurants, pubs and clubs'
- 15% were previously employed in 'Banking, Miscellaneous Insurance, Finance and Business'

Registered ASW underemployment

Individuals who are working fewer hours than they would like or who would like to change their current working situation are classified as underemployed. The International Labour Organisation (ILO) provides two definitions of underemployment⁸:

- *time-related underemployed*, which is due to insufficient hours of work
- *inadequate employment situations*, which are due to other limitations in the labour market, which limit the capacities and well-being of workers

In Jersey, individuals who are in receipt of Income Support are required to work at least 35 hours per week, unless exempt from full-time work. Those who do not meet this requirement must register as Actively Seeking Work. The total ASW figure therefore includes individuals who are working less than the 35 hours per week required under the terms of Income Support. The number of ASW underemployed also includes individuals who are on the Foundations programme and engaged in paid work of 32 hours per week. In December 2015 there were 40 such individuals. Both sets of individuals will simultaneously be working and actively seeking work. They are classified as underemployed under the ILO definition of time related underemployment.

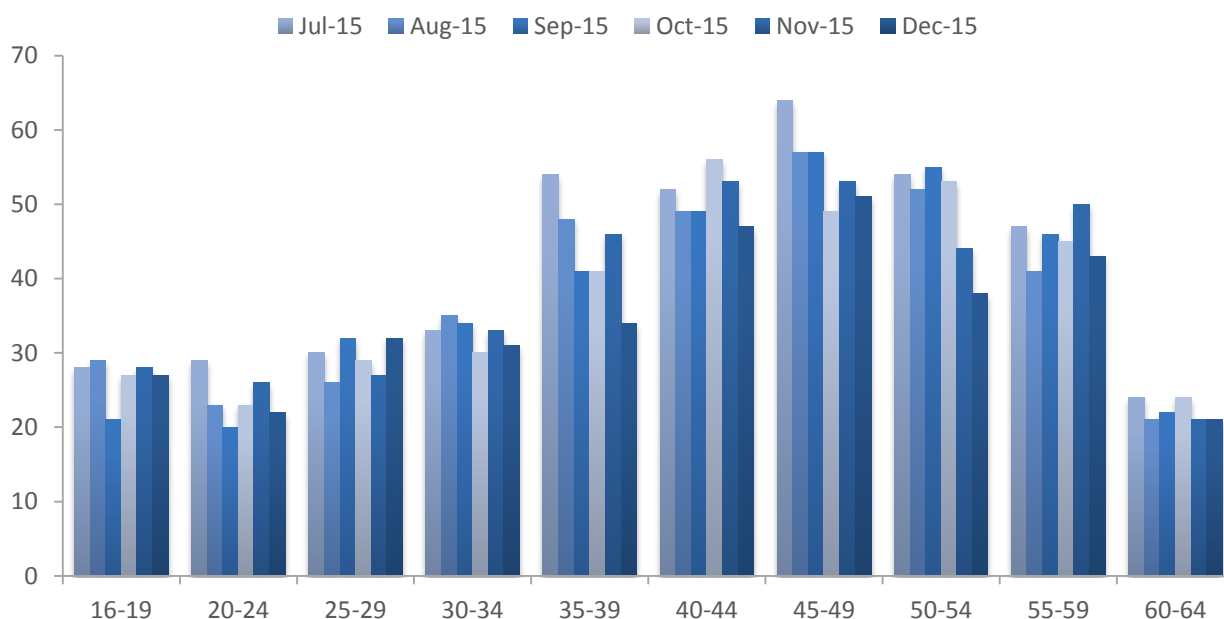
In December 2015, a quarter (25%) of all people registered as ASW were underemployed; the numbers of such individuals in each of the last twelve months are shown in Table 1.

Table 1 – Number of ASW registered underemployed, December 2014 – December 2015

	Dec 14	Jan 15	Feb 15	Mar 15	Apr 15	May 15	Jun 15	Jul 15	Aug 15	Sep 15	Oct 15	Nov 15	Dec 15
Individuals	410	390	410	420	410	390	410	420	380	380	380	380	350
Percentage of total ASW	28%	26%	25%	27%	29%	28%	28%	28%	27%	24%	25%	26%	25%

Figure 9 shows the age distribution of people registered as ASW underemployed; almost three-fifths (58%) were aged 40 years or over.

Figure 9 - Age distribution of ASW registered underemployed, July 2015 – December 2015



Of those people who were registered as ASW underemployed in December 2015: almost two-thirds (64%) were female, almost three in ten (29%) had been actively seeking work for more than a year and 93% were claiming Income Support.

⁸ International Labour Organisation: *Resolution concerning the measurement of underemployment and inadequate employment situations*.

Notes

The number of people registered as ASW includes people who are on the Advance to Work, Advance Plus and Work Right schemes. The ASW total will also include individuals who are working fewer than the 35 hours per week required under the terms of Income Support; such individuals will simultaneously be working and registered as actively seeking work.

When placing the figures contained in this report in a longer-term historical context it should be recognised that there have been significant changes in the criteria relating to registered ASW in Jersey in recent years. In particular, the introduction of Income Support in 2008 led to greater numbers of individuals who were actively seeking work being included in the registered figures.

People who are registered as actively seeking work receive the support of one of the government employment schemes, which come under the administration of Back to Work:

- Advance to Work – for jobseekers aged 16 - 24 years
- Advance Plus – for jobseekers aged 20 - 65 years with an industry-specific interest
- Work Right – for jobseekers with barriers to employment or who have been registered as ASW for 52 weeks or longer
- Work Zone – for registered jobseekers who are closer to employment
- Ready for Work – for newly registered jobseekers or jobseekers without a dedicated advisor

In addition to the above, some individuals registered as ASW will be assisted by the Jersey Employment Trust (JET), a registered charity whose role is to assist people with a disability to prepare, find and maintain employment. On 31 December 2015 there were 90 such individuals being assisted by JET.

As well as the development and expansion of the above schemes, Back to Work is responsible for:

- the Employment Incentive
- a dedicated Back To Work Recruitment Team
- industry and employer specific initiatives

The aim of Back to Work is to increase access to job opportunities for locally qualified people who are registered as actively seeking work by supporting jobseekers and building a partnership with employers to provide sustainable job opportunities.

*Statistics Unit
8 January 2016*

Appendix A

Changes in ASW Recording / Income Support Criteria

Whilst there is no legal requirement for unemployed residents of Jersey to register as actively seeking work with the Social Security Department, there are certain requirements to register for those in receipt of income support payments. Changes to these requirements as well as certain administrative changes within Social Security can result in changes in the total number of people being considered as ASW. The most recent such changes are as follows:

Date of Change	Description	Approximate Impact
September 2015	<p>Change in the Income Support criterion relating to parents with young children of school or nursery age. Prior to 1 September 2015 parents on income support, who were responsible for a child, had no job seeking requirements until the child turned 5 years of age, and therefore were not required to be registered as Actively Seeking Work.</p> <p>From 1 September 2015 parents where the youngest child on their income support claim is turning 5 years of age in the current academic year are now classified as jobseekers and are required to seek 25 hours of work per week – this resulted in approximately 80 additional individuals registered as ASW.</p> <p>In addition, parents where the youngest child on their income support claim is turning 4 years of age in the current academic year are also now classified as jobseekers and are required to seek 15 hours of work per week – this resulted in approximately 140 additional individuals registered as ASW.</p>	+ 220 registered ASW
May 2015	Change of classification for certain self-employed individuals who are seeking further employment. This administrative change involved the reclassification of 70 such individuals who are now recorded as ASW.	+ 70 registered ASW
February 2015	The threshold for the cumulative Long Term Incapacity Allowance (LTIA) percentage rate was increased from 35% to 40%. As any individuals below this threshold, in receipt of an Income Support claim, are required to register as ASW, the raising of the LTIA threshold resulted in an additional 90 individuals being registered as ASW at the end of February 2015 compared with the previous month.	+ 90 registered ASW
April 2014	April 2014 – Prior to this point, the end-of-month ASW figures published by the Statistics Unit were based on data compiled by the Social Security Department on (or around) the 15th of the following month. From the April 2014 report onwards the end-of-month figures published are based on data compiled on (or around) the 1st of the following month. Moving the data compilation date forward by two weeks introduced a small upward systematic shift (of approximately 20 individuals) in the number of people classified as ASW at each end-of-month.	+ 20 registered ASW

Appendix B

Number of individuals registered as ASW, Jan 2011 – December 2015⁹

		Male	Female	Total	Seasonally adjusted total			Male	Female	Total	Seasonally adjusted total
2011	Jan	910	480	1,390	1,330	2014	Dec	1,030	720	1,750	1,800
	Feb	960	510	1,470	1,320		Jan	1,090	770	1,860	1,780
	Mar	850	460	1,310	1,290		Feb	1,080	780	1,860	1,710
	Apr	870	490	1,350	1,390		Mar	980	760	1,730	1,650
	May	820	520	1,340	1,430		^(c) Apr	900	720	1,610	1,600
	Jun	780	500	1,280	1,340		May	840	700	1,530	1,590
	Jul	800	550	1,350	1,360		Jun	790	710	1,510	1,580
	Aug	820	530	1,350	1,360		Jul	780	740	1,520	1,570
	Sep	850	520	1,370	1,410		Aug	780	720	1,510	1,580
	Oct	920	570	1,500	1,500		Sep	750	700	1,450	1,540
	Nov	960	580	1,530	1,510		Oct	760	670	1,430	1,480
	Dec	960	580	1,540	1,570		Nov	780	680	1,450	1,460
2012	Jan	1,050	650	1,700	1,620	Dec	760	680	1,440	1,460	
	Feb	1,130	690	1,820	1,670	2015	Jan	790	700	1,490	1,380
	Mar	1,100	700	1,810	1,760		^(c) Feb	870	760	1,620	1,450
	Apr	1,060	680	1,740	1,760		Mar	820	740	1,560	1,440
	May	1,040	680	1,720	1,800		Apr	710	680	1,390	1,420
	Jun	1,020	700	1,720	1,760		^(c) May	730	670	1,400	1,460
	Jul	1,020	720	1,740	1,750		Jun	730	720	1,450	1,500
	Aug	1,020	650	1,670	1,710		Jul	770	720	1,490	1,510
	Sep	970	650	1,610	1,680		Aug	710	690	1,400	1,480
	Oct	1,020	700	1,720	1,740		^(c) Sep	720	840	1,560	1,610
	Nov	1,090	730	1,820	1,820		Oct	720	800	1,520	1,550
	Dec	1,100	740	1,840	1,870		Nov	710	780	1,490	^(r) 1,490
2013	Jan	1,210	810	2,020	1,940		Dec	670	720	1,390	1,420
	Feb	1,210	820	2,030	1,880						
	Mar	1,230	820	2,050	1,980						
	Apr	1,140	800	1,930	1,910						
	May	1,080	800	1,880	1,930						
	Jun	1,040	810	1,850	1,910						
	Jul	1,030	840	1,860	1,900						
	Aug	990	820	1,820	1,890						
	Sept	1,000	800	1,810	1,920						
	Oct	1,040	770	1,800	1,860						
	Nov	1,060	750	1,810	1,820						

⁹ Numbers are rounded independently to the nearest 10; hence, components may not sum to totals.

^(c) Change in ASW Recording / Income Support Criteria - see [Appendix A](#) for more details

^(r) Revised